



CHRISTIAN
SCHOOLS
Australia

PROSPECTUS

BENEFITS OF A CSA MEMBERSHIP

An overview of the services and resources available to CSA member schools and staff.

C O N T E N T S

WELCOME	5
WHO IS CSA	7
OUR MISSION, OUR VISION	8
OUR HISTORY	10
OUR FRAMEWORK	12
OUR ORGANISATIONAL STRUCTURE	14
OUR CHARTER	16
STATEMENT OF FAITH	19
MEMBERSHIP BENEFIT OVERVIEW	20





Excellence in Education | Values for Life | Hope for Eternity



W E L C O M E

A warm welcome to Christian Schools Australia.

CSA was established in 2002 and we are proud of our innovative and purpose-driven approach over two decades of service to Christian education. At CSA, we are committed to the vision of seeing Australia, enriched by thriving Christian schools that create a positive personal, cultural, and societal impact. We seek to be active participants in God's plan to see a new generation of young people take hold of His promises for their lives with a sense of hope, anticipation, and vitality.

Membership with CSA affords schools extensive advocacy, research, support, resources, and professional development opportunities. In addition to protecting and preserving a space for Christian education, CSA provides a range of resources and services that enable Christian staff to remain at the forefront of educational practice and to deliver quality outcomes for students both now and into the future.

Imagine with us a future of exploring CSA's offerings and gain an insight into the vision and ethos of Christian Schools Australia. To discover God-shaped possibilities for your students, society, and the world – possibilities filled with promise and hope.

If you would like any further information about how Christian Schools Australia might best serve your school's needs, please contact us directly. We have local offices in each state capital with staff who are only too willing to help and assist you anyway they can.

Christian Schools Australia would value the opportunity to partner with you to advance Christian education in Australia. We look forward to connecting with you soon.

Daniel Pampuch

Dr. Daniel Pampuch
Chief Executive Officer
Christian Schools Australia





LOCATIONS
around the country



STAFF
employed at CSA schools



STUDENTS
educated by member
schools

WHO IS CSA?

Christian Schools Australia (CSA) is the largest association of Christian schools in the country and has member schools educating 86,000 students and employing more than 13,500 staff at over 200 locations across the nation.

CSA was established in 2002, bringing together Christian schools with a common purpose. Through CSA membership, schools both participate in and gain support from the association through resourcing, advocacy and representation, as well as the valued connections developed with other member schools.

CSA is committed to honouring Christ and advancing the Kingdom of God through the means of Christian education. CSA executive staff serve member schools directly and through an extensive professional network. Bespoke CSA resources, research and services, ensure schools are provided with a variety of opportunities to support and enhance their vital work.

CSA supports Christian Schools across the nation as they fulfil their mission of providing Christ-centred education to the students entrusted into their care.

This support includes:

- Assessment of current national and state education issues impacting faith-based schools;
- Assistance with governance and compliance issues;
- Advocacy for individual schools and on behalf of the movement;
- Leadership development and school-based governance training;
- Real time assistance with critical incident management and media representation;
- Professional development through local, state, national and international conferences;
- The provision of resources centred around the Christian School Architecture including: culture, community, biblical literacy, pedagogy, leadership and curriculum;
- School-based and sector-wide research and reports;
- Additionally, CSA maintains positive relationships with Federal and State Governments, their agencies and other key stakeholders, and plays a leading role in the public policy debate to ensure the voice of Christian schools is heard, understood and provided for.

Explore our Resources



OUR VISION



Our vision is to see all young people have access to excellent Christian education, so that they may:

- know who they are in Him;**
- be trained up to fully utilise their unique gifts and talents;**
- and be a positive impact in society as they play their part in His redemptive plan.**

This vision is summarised with our tagline:

Excellence in Education | Values for Life | Hope for Eternity

OUR MISSION

The mission of CSA is to intentionally pursue the outworking of our vision in the following three areas:



Preserve a Place

CSA is called to preserve and enhance the freedom to operate Christian Schools in Australia through effective representation to governments and other bodies.



Embed Christian Distinctives

CSA is called to preserve the biblical distinctiveness of schools through the continued development of Christian approaches to policy, educational practice, employment, training and community development.



Create Deeper Propositions

CSA is called to ensure the continued growth and fruitfulness of the Christian schooling movement by retaining an outward focus, generational appropriateness and cultural awareness.



OUR HISTORY

Christian Schooling has a rich heritage within Australia. In fact, the very first schools in Australia were Christian schools.

1872

Public Schools Commence

Victoria became the first Australian state to pass an Education Act providing for free, secular (in the sense of non-sectarian) public education. Other states followed suit in the following two decades.

1976

Christian Community Schools

The first Christian Community School, a predecessor organisation to Christian Schools Australia, commenced in 1976 and many other Christian schools followed in the late 1970s and early 1980s.

2002

Christian Schools Australia

CSA commenced operations with a team of 7 pioneering staff dedicated and committed to the cause of Christian education in Australia. CSA provides a wide range of support to schools, and the wider community, through the advancement of Christian education in Australia and internationally.

2022

20th Anniversary

CSA celebrated 20 years of service and growth. The CSA team had grown to 20 staff, with member schools operating at over 200 sites, and educating 86,000 students.

1793

Origins

Rev Richard Johnson, the first chaplain to the colony of NSW, established an Anglican school in 1793. Free "charity schools" run by other denominations gradually came into existence in the following decades.

1960-1975

Christian Schools Established

The current wave of affordable, low-fee Christian schools have their origins in the 1960s and 1970s. The earliest of these commenced where groups of Christian parents came together to start Christian schools. In the mid 1970's local Protestant churches increasingly looked to start schools staffed by Christians and sought to teach a Bible-based curriculum.

1980-1999

Christian Schools Rapid Growth

Affordable low fee, Christian schools, staffed by Christians and teaching from a biblical perspective became an established part of the education landscape.

During the 1980s and 1990s they represented the fastest growing sector of schools. Operating with a variety of governance structures, all were committed to communicating the gospel as an essential part of educating the whole child.



When I think of CSA's commitment to quality Christian education, its involvement in research and helping member schools to offer the best they can whilst empowering them to 'hold their position' in matters of faith, I am tremendously encouraged and optimistic about the future of Christian Schools.

Carol Davis, Principal Emmanuel Christian Community School



CSA FRAMEWORK

CSA has designed an architecture or framework called, **2020 Horizon and Beyond**, which seeks to conceptualise the essential elements that make a Christian school distinct and leads it onto a path of maturity. This framework is how the Mission and Vision is operationalised by CSA.

The framework considers how CSA:

Preserves a Place (CSA 1.0); through advocacy.

Embeds Christian Distinctives (CSA 2.0); through culture, community, biblical literacy, pedagogy, leadership and curriculum; and helps

Create Deeper Propositions (CSA 3.0); in the areas of formation, advocacy, thought leadership, modes and models of schooling, leadership development and teaching and learning.

The ultimate goal is that our schools are Christ proclaimers who deliver high quality education to their communities.



Our hope for Christian schooling, is that, by operating as effective, missionally-focussed schools, a vision of the Kingdom and Father's heart, both individually and corporately, is being painted. At CSA, we seek to move away from the posture of what we are against (ie. protesting), to a place of painting a vision of the way we believe God sees how things could and should be (ie. professing). We seek to profess this vision for a better society and world.



At Christian Schools Australia, we are a people of the **cross**, who are called to **proclaim Christ**, as we deliver high quality education to the world.



The **Profess Statements** seek to capture a vision for society in which schools can actively play a role. It seeks to provide a Kingdom vision for how the world was meant to be.

CSA's Profess Statements are:

First Peoples Heart: In relationship with indigenous peoples, CSA seeks to develop a new narrative with our indigenous brothers and sisters. As First and Second peoples, we seek to journey together creating just and equitable relationships, listening and learning from each other.

Renewal of Creation: As good stewards of the environment, we see the flourishing of the whole of God's creation. We act to renew the earth from the damage done and stand in solidarity with people most impacted by human-induced environmental impact.

Compassionate and Diverse Nation: Welcoming as a multi-cultural society. We recognise that we are a nation of diverse cultures, languages, faiths, ethnic groups and experiences. We seek to be a compassionate nation, where every person is treated fairly and made to feel welcome and safe - regardless of their country of origin or mode of arrival.

Flourishing Communities: Champions for an inclusive and equal society. We seek the wellbeing of each Australian and particularly those who find themselves on the margins, addressing issues of poverty, homelessness, domestic violence and suicide, etc.

Just and Peaceful World: Uphold our commitment to human rights, globally. We seek to act with courage and conviction to build a just and peaceful world. To train up global citizens who uphold human rights everywhere, acting in the best interest of all people and the planet.

[Explore our Architecture](#)

STRUCTURE & GOVERNANCE

CSA ORGANISATIONAL STRUCTURE

Christian Schools Australia consists of independent Christian schools – single and multi campus entities that are self-governing.

Christian Schools Australia is structured as a company limited by guarantee and follows the principles of policy governance, with a core team of Executive Officers and support staff.

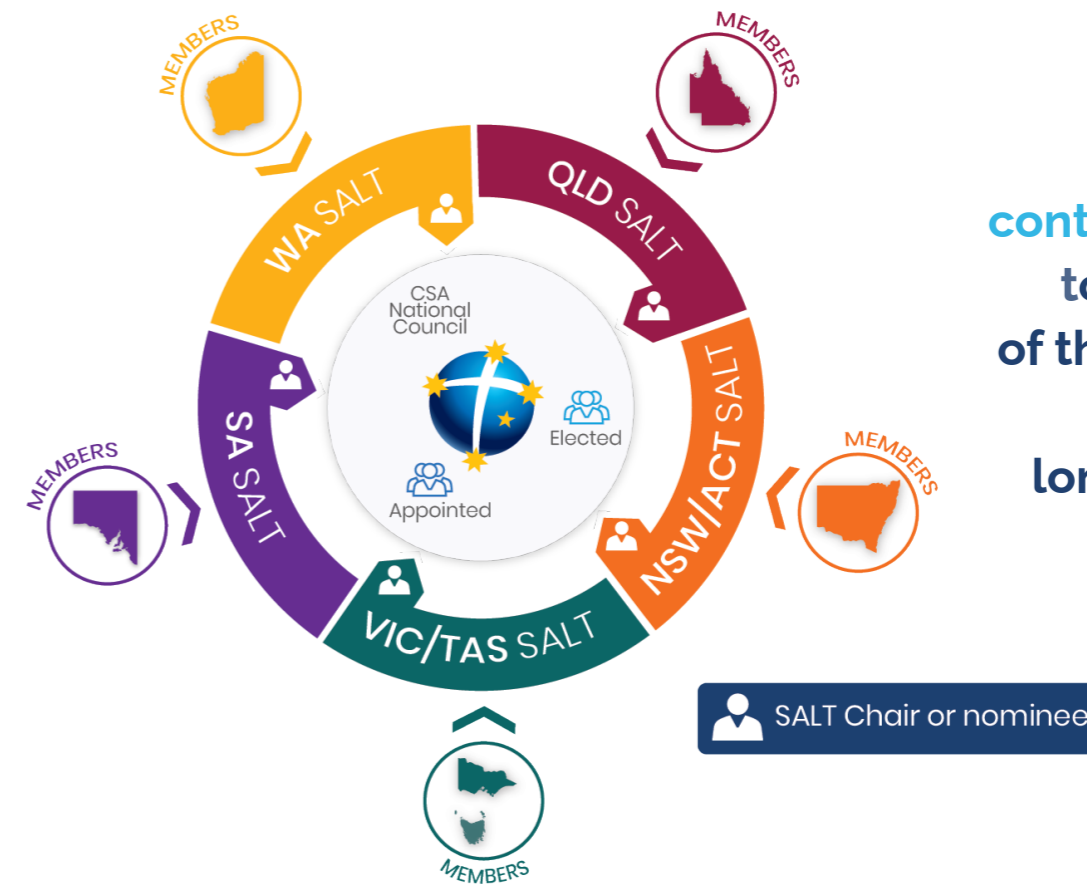
CSA is governed by a National Council, working with State Alliance Leadership Teams appointed by the member schools. Together, these three elements - the membership, appointed leadership teams (SALT) and Executive Officers - work to preserve and enhance the ongoing vision of the movement.

The CSA National Council consists of the Chair of each State Alliance Leadership Team (SALT), or a nominee, as well as elected and appointed members.



All that CSA does is shaped by a purposeful commitment to a vision of Christ-centred education that honours God.

CSA GOVERNANCE



Each part contributes richly to the success of the movement in achieving long-held aims.

The overall governance of Christian Schools Australia Limited is by the National Council, which, as the board of directors, has responsibility to the member schools for achieving the purposes for which CSA was established.

The CSA National Council operates as a "policy governance" board, approving the overall vision and objectives of the organisation, while operations and management are delegated to the CEO.

Meet our National Council

CSA CHARTER

We welcome schools aligning with our values, vision and mission to join us in partnership to realise our collective goals together.

All of our member schools ascribe to the Christian Schools Australia Charter and Statement of Faith.

Christ-centred & biblically based

A Christian school is a Christ-centred, biblically-based community.

Lordship of Christ

The Lordship of Christ is foundational in all its teaching and learning.

Governed biblically

Its governors acknowledge Jesus Christ as Lord and Saviour, and formulate policies and make decisions prayerfully, in dependence on the wisdom of God and in the light of biblical principles.

Christian Staff

It is committed to implement policy to support the principle that an essential characteristic of a Christian school is the employment of staff members who acknowledge Jesus Christ as Lord and Saviour.

Parental Mandate

It acknowledges that parents are mandated by God to bring their children up in the discipline and instruction of the Lord, and have the prime responsibility for the education of their children. It also accepts that parents, the church and the State may all exercise legitimate roles in the operation of schools in such ways that parents may with integrity fulfil their responsibility under God.

Students of value

Its students are valued as God's image-bearers.

Members abide in love

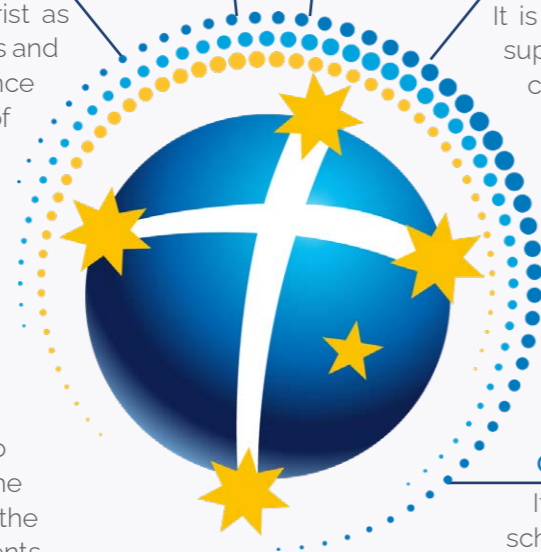
Its members are encouraged to love each other as Christ loves them.

Standard of excellence

In accordance with biblical principles it maintains the highest standards of moral, ethical and financial practice, operates within applicable government requirements; and is accountable for its operation.

Cooperation with others

It cooperates with other Christian schools in order that God's Kingdom may be advanced



There is no doubt in my mind that CSA's advocacy work is critical in enabling Christian schools to operate in a favourable legislative environment and strengthen the Christian school movement in Australia. Its work over two decades of ensuring that policy makers are aware of the potential impact of legislation on Christian schools has been vital in preserving and enhancing the mission and values of Christian schools across the country.

Peter Sheahan, Principal, Waverley Christian College

We welcome schools aligning with our values, vision and mission, to join us in partnership to realise our collective goals together.





Compass Conference was an incredible opportunity to grow in biblical understanding of what it means to be made in God's image, and what it means to be a leader. Rather than learning this by ourselves, it was awesome to be able to do this in a community of student leaders.

Samuel, Head Prefect.

Explore Compass



STATEMENT OF FAITH

There is one God and He is sovereign and eternal. He is revealed in the Bible as three equal divine Persons – Father, Son and Holy Spirit. God depends on nothing and no one; everything and everyone depends on Him. God is holy, just, wise, loving and good. God created all things of His own sovereign will, and by His Word they are sustained and controlled. God is the God and Father of our Lord Jesus Christ. He is also Father of all whom He has adopted as His children. Because of God's faithfulness and His fatherly concern, nothing can separate His children from His love and care. The Lord Jesus Christ is the eternally existing, only begotten Son of the Father. He is the creator and sustainer of all things.

GOD

He was conceived by the Holy Spirit and born of a virgin, truly God and truly man. He lived a sinless life and died in our place. He was buried, rose from the dead in bodily form and ascended to heaven. Jesus is King of the universe and head of the church, His people whom He has redeemed. He will return to gather His people to Himself, to judge all people and bring about the consummation of God's Kingdom.

The Holy Spirit proceeds from the Father and the Son. He convicts people of their sin, leads them to repentance, creates faith within them and regenerates them. He is the source of their new sanctified life bringing forth His fruit in the life of believers. He gifts believers according to His sovereign will, enabling them to serve the Lord.

THE BIBLE

The Bible, which is comprised of the books of the Old and New Testament, is the inspired, inerrant and infallible Word of God, and the only absolute guide for all faith and conduct. It is indispensable and determinative for our knowledge of God, of ourselves and of the rest of creation.

Adam and Eve, the parents of all humankind were created in the image of God to worship their Creator by loving and serving Him, and by exercising dominion under God's rule by inhabiting, possessing, ruling, caring for and enjoying God's creation. Consequently, the purpose of human existence is to glorify God and enjoy Him forever.

Sin entered the world through Adam's disobedience, because of which, all people are alienated from God and each other and, as a result, they and all creation are under God's judgement. All people have sinned and, if outside of Christ, are in a fallen, sinful, lost condition, helpless to save themselves, under God's condemnation and blind to life's true meaning and purpose. God holds each person responsible and accountable for choices made and actions pursued. Human responsibility and accountability do not limit God's sovereignty. God's sovereignty does not diminish human responsibility and accountability.

GOD'S WORLD

Salvation from the penalty of sin is found only through the substitutionary, atoning death and resurrection of the Lord Jesus Christ. As the sinless One, He took upon Himself the just punishment for our sins. Through His death and resurrection, the Lord Jesus has destroyed the power of Satan, who is destined to be confined forever to hell along with all those who reject Jesus as Lord. Out of gratitude for God's grace and in dependence on the Holy Spirit, God's people are called to live lives worthy of their calling in love and unity and in obedience to God in all spheres of life. They are responsible to ensure that the gospel is faithfully proclaimed. Christian parents are required to bring their children up in the discipline and instruction of the Lord and to diligently teach them the truth of God's Word.

MEMBERSHIP BENEFITS



ADVOCACY



SERVICES



SUPPORT



NETWORKS



RESOURCES



EVENTS

CSA is an effective national voice for Christian Schools. Our Executive Officers have particular expertise and experience in advocacy, policy and government relations. CSA is a recognised stakeholder group with Federal and State governments.

This service includes:

- regular engagement with elected representatives and policy makers;
- ensuring the voice of Christian schools is heard in the media and public debate;
- direct advocacy campaigns around issues of concern to Christian schools;
- submissions to parliamentary inquiries on critical matters, including religious freedom and funding issues.

CSA offers a range of services to assist schools in the practical management of their operations.

These include:

- Teacher/Leader recruitment and Job Board services;
- Staff Induction Package;
- Dispute resolution and mediation;
- Copyright Licensing;
- Staff Relations Service (NSW/ACT) including HRM Materials;
- Comprehensive Governance Training programs;
- Leadership Development Courses (e.g. Step up Middle Leaders and Deputies Leaders Course);
- Development Tools.

Christian Schools Australia provides a wide range of support and advice to our member schools.

These include:

- Critical Incident support;
- School registration support;
- Supplier relationships;
- Bespoke financial, enrolment and governance tools;
- CSA Architecture School Improvement Tool and guided process facilitation;
- State-based Executive Officer and National Secretariat access for support, training and resources.

With over 13,500 staff forming the CSA community, and connections globally, the opportunity for collaboration is enormous.

With an online networking platform (the CSA Collective) available for every staff member at every member school, connection can be made with the click of a mouse.

In addition to the broader network, there are also established Communities of Practice, partnerships with mission agencies, a range of digital communication channels, international connections (Global Connect) and in person opportunities at events.

CSA's resources cover the breadth of a school's needs. From the boardroom to the classroom, CSA's proven and up-to-date resources can support your school and staff.

These include:

- Professional Development
- Pedagogy
- Biblical Literacy
- Staff Induction
- Formation
- Biblical Worldview Curriculum
- Christian Teacher resources
- Participation in research and priority access to results.
- Leadership Framework

The CSA website also houses a library of resources that seek to preserve and promote a Christian distinctive.

A [sample of resources](#) can be found on the CSA website.

CSA provides quality events throughout the year, from state-based networking opportunities and training, through to national events that provide access to world-class speakers and development. The events calendar is available via csa.edu.au/events.

Our state-based Executive Officers offer relevant opportunities for segments of our community, as well as broader State-wide conferences, each year.

Nationally, CSA hosts a National Leaders' Summit, as well as running the National Policy Forum and Symposium for the broader Christian Education network. Additionally, a National Business Conference is held every two years.

Explore Advocacy

Services Guide

Member Support

The Collective

Resource Snapshot

View Events Calendar





ADVOCACY

ADVOCACY AND GOVERNMENT RELATIONS

Christian Schools Australia is an effective national voice for Christian Schools, providing members with direct advice and assistance in dealing with government authorities. For example, we provide:

- advice and assistance on matters of commonwealth and state funding, compliance, and other statutory issues relating to Christian schools
- assistance with state registration and accreditation

MEDIA REPRESENTATION

As part of its integrated advocacy and government relations strategy, Christian Schools Australia regularly monitors and engages with all forms of media on behalf of member schools, and plays a direct role in public debate about Christian schooling. CSA is a key reference point for media on matters to do with Christian schooling.

CSA deals directly with media on behalf of members when requested, including time-critical responses to media enquiries, and can act as a media spokesperson on critical or controversial issues, or provide advice and guidance on communication strategies.

GOVERNANCE, LEADERSHIP & ADMINISTRATION ADVICE

Executive Officers in each state and territory, where member schools are located, maintain regular contact with schools and are a close source of relationship, fellowship and advice. Nationally, CSA has key personnel whose experience includes board governance, policy, government relations, finance and administration. State and National staff can work together to help advise schools in a range of key disciplines.

GROWING CHRISTIAN SCHOOLS

CSA can assist those wanting to start a Christian school with both general and specific advice, depending on their stage of development. This includes existing schools wanting advice about starting new campuses, or churches (and others) seeking to start a new standalone school.

CSA can provide advice and assistance regarding registration and other statutory requirements.

Through the CSA network, assistance may also take the form of shared policies and curriculum.

POLICY BRIEFINGS

Briefings on state and national government policy are distributed to member schools regularly. These are also housed on the CSA website, along with a record of all formal media releases. Briefings of a sensitive nature are only accessible by member schools, but many are available for the public to access.

[View Briefings](#)

SERVICES



[Search Jobs](#)

CHRISTIAN SCHOOL JOBS

The CSA christianschooljobs.com.au website hosts a very active job search function. Listings are complimentary for our member schools. This equates to a significant saving per advertisement.

- The CSA Job Service is extremely popular with over 2000 jobs posted annually.
- Job ads are also posted to Christian Schools Australia's social media platforms.

[SRS - Learn More](#)

STAFF RELATIONS SERVICE (NSW/ACT)

For schools in NSW/ACT, CSA provides access to an optional Staff Relations Service (SRS). CSA's SRS seeks to support the school with its staff relations so that the school can reflect its Christian distinctive in all its communication and practices with their staff. SRS provides information and guidance on industrial relations and employment related matters including negotiation of enterprise agreements and comprehensive support through any employment disputes.

This is one of the most relevant courses that I have engaged with in a really long while. Thank you so much for all the inspiration, skill development, and a chance to be free to learn... especially as it was so easy to trust your leadership, knowledge and wisdom.

Heather Brown, Head of Junior Curriculum, Riverside Christian College (Step-Up 2023).

LEADERSHIP DEVELOPMENT

CSA provides a diverse range of development programs for emerging and existing leaders. Many of the resources CSA have developed include an in-person training element - led by our professional staff with extensive executive leadership experience and expertise.

DISPUTE RESOLUTION AND MEDIATION

CSA can assist school boards and senior staff to work through difficult issues and suggest ways towards a resolution. We uphold New Testament principles of relationship, working towards resolution of issues and restoration between the parties wherever possible. We may work in collaboration with other external organisations to provide access to external Christian mediation solutions.





S U P P O R T

Member Support and Advice

CRITICAL INCIDENT & EMERGENCY SUPPORT

CSA provides context-sensitive real-time support for members during critical incidents. CSA can provide timely advice about dealing with authorities, media, the school community and other stakeholders including the wider public.

Where requested, CSA can deal directly with stakeholders on behalf of a member school. Our support is based on clear biblical principles of relationship, accountability, integrity, and compassion.

SCHOOL REGISTRATION

CSA supports schools through the initial state registration and accreditation processes. Many of our team are experienced leaders having served as principals and have first-hand experience of the registration and review processes of each state. Our member schools also contribute to this support as they bring substantial experience to this role with decades of direct involvement in the registration of Christian schools. We focus on working in ways that meet state requirements, whilst preserving the particular ethos of Christian education.

SUPPLIER RELATIONSHIPS

CSA fosters beneficial relationships with school suppliers. We help explain the particular needs of Christian schools to providers of goods and services, and act as a bridge between selected business enterprises and member schools.

Details of these arrangements are made available on our website.

STATE ALLIANCES

A feature of the CSA movement is the provision of close support at a state level, with the local Executive Officer and State Alliance Leadership Teams (SALT) who maintain close and frequent contact with member schools.

COPYRIGHT LICENSING

CSA has agency arrangements to provide copyright and performance licensing on behalf of members with Copyright Agency Ltd, OneMusic Australia and Screenrights. Licensing arrangements are offered annually to all CSA members.

N E T W O R K S



CSA COLLECTIVE

The CSA Collective is a collaborative online community where schools within the CSA network can share advice, ideas, resources, and best practices with other members in a secure, efficient and easy-to-access online format.

This community also enables CSA members to communicate more dynamically with our team, receiving the latest updates in real time.



FLAME

FLAME is a network that inspires, encourages and supports women to take up leadership roles at all levels within a school context, be that in the classroom, administration, management, or on a board. FLAME aims to develop the capacity of female leaders and aspiring leaders to lead with confidence and humility to be all that God has created them to be. Women are challenged to consider strategic and creative ways they can exercise faithful leadership wherever they are now, leading to potential organisational changes that benefit the whole school community.



TERTIARY PARTNERS

The CSA network within the Tertiary sector is extensive. CSA has partnerships with six local higher education providers including: Avondale, Christian Heritage College, Eastern, Excelsia, Morling and Tabor.

This network of Tertiary Partners have educated many influential Christian leaders who have made significant impacts on communities and churches across the globe.

COMMUNITIES OF PRACTICE

Communities of practice are co-created opportunities for individual and organisational professional development. Clusters of schools, come together to generate and deepen knowledge and understanding through the sum of group activity. Examples of communities of practice include: teaching and learning, school improvement, action research, leadership development, etc.

GLOBAL CONNECT

Schools in the CSA movement are characterised by their mission activities at home and in the developing world.

Global Connect is a relationship-based network, welcoming partner organisations and individuals to further Christian Education, Leadership, School Partnership and Service Learning, globally.



Global Connect





RESOURCES

GET TO KNOW CHRISTIAN SCHOOLING

Flourish: A Vision of Christian Schooling is a resource to empower staff in Christian schools to embrace purpose and mission as they seek to bring the message of Jesus, through education, to a world in need. Flourish explores the vision, history and purpose of Christian schooling, the hallmarks of a Christian school culture, the role that faith, theology and worldview play in a school environment and what it looks like to work, teach, and live out the Christian life in a school. It is designed as a staff induction program for staff who may be new to Christian schooling.

SCHOOL IMPROVEMENT

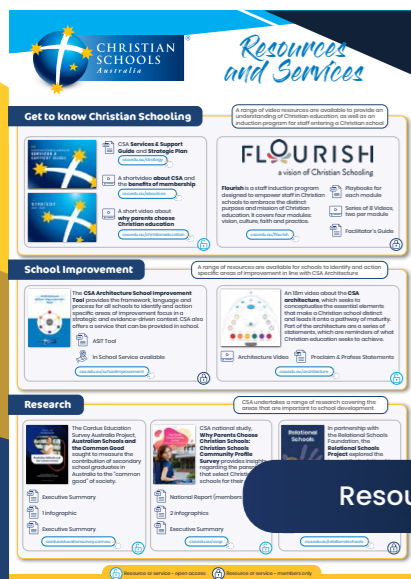
School Improvement consists of purposeful, strategic activities undertaken to develop excellence, improve student learning outcomes and, ultimately, positively impact student outcomes. School Improvement is relevant to all CSA schools, and is effectively an 'umbrella' action strategy for all other facets of school operation. In-person delivery of these resources are a service available to member schools. Resources available to member schools include The CSA Architecture School Improvement Tool (ASIT) and Five Steps to Moving Forward and Improving Schools.

We found ASIT's approach wonderfully non-invasive, creating a sense of comfort and safety for our staff and students. Their method of questioning was respectful and effective, leading to a report that was concise and filled with valid and actionable recommendations. These insights became an immediate asset in our school improvement plan, providing a powerful voice for our students and the wider school community. This experience with ASIT has been invaluable in supporting our commitment to continuous improvement and excellence.

Fourie Jordaan, Principal, Dale Christian School.

FORMATION AND BIBLICAL LITERACY

Formation is at the heart of our work as Christian schools, and resources in the CSA Formation Hub are designed to support schools in this endeavour. The Hub provides a framework to help schools thoughtfully consider their approach to student and staff formation and includes a range of resources to cultivate biblical and cultural literacy, and to plan and teach from a biblical worldview. Resources in this area include: Formation Video Series; Christian Studies Program; Open Book: Biblical Literacy.



Resources Guide

Sample Resources

RESOURCES



LEADERSHIP

For Christian school leaders to flourish, they need to be equipped with a clear understanding of the types of practices that will enhance and expand their leadership capacity within Christian schools. CSA Members have access to a suite of engaging, relevant and high quality tools, videos and resources that relate to Christian Leadership and building leadership capacity.

Some of these leadership resources include:

- **CSA Leadership Framework** - This landmark framework and related resources, rubrics and 360 tools draw from the research contained in the CSA Leadership Framework. This research was developed through a landmark partnership with the Church of England Foundation for Educational Leadership in the United Kingdom.
- **Executive Leaders Business Course** - The Executive Leaders Business Course provides an overview of the fundamentals of school business and governance for executive or aspiring executive level educators, support and administration leaders.
- **Step Up: A Training Course for Middle Leaders** - This resource has been intentionally designed and developed for middle leaders in Christian schools. Middle leaders are primarily responsible for coordinating and leading teams across various functional areas within the school through key roles that may include year level leaders, subject leaders, curriculum leaders and pedagogy coaches.
- **Deputy Principal's Leadership Program** - Fresh in 2024 is a leadership program specifically designed for Deputy Principals, which will help develop the unique leadership qualities required to flourish in this role.
- CSA also provides a range of professional learning for leaders throughout the year.

TEACHING AND LEARNING

Core to our work in Christian Schools is the equipping of students to embrace biblical truth and strive for academic success. Our Teaching and Learning Hub is rich with supportive material to aid your school in developing a school-wide teaching and learning framework, based on world class theories and practices of pedagogy, as well as curriculum planning resources.

Amongst these resources you will find:

PeRL: Pedagogies enabling Redemptive Learning. Specific approaches include a Connection approach, Inclusion approach, Justice approach and Voice approach.

God's Big Story. A tool that equips teachers to address the Australian Curriculum with curriculum planning resources grounded in biblical worldview. The biblical narrative of Creation, Fall, Redemption and Restoration provide a lens through which students and can expand their understanding of God, humanity and the world in which they find themselves.

PeRL Trailer

God's Big Story Trailer





R E S O U R C E S

RESEARCH

CSA undertakes a range of research covering the areas that are important to school development and flourishing. These range from the development of school communities and relationships, through to school choice and levels of parent engagement and satisfaction with Christian schools and the impact that Christian schooling contributes for the common good within society. CSA Research is also a fundamental element in terms of advocacy, as we petition the benefits and contributions that Christian schools make in the marketplace and seek to effectively establish policies and legislation which allow Christian schools to continue to operate and flourish.

Since 2016, a plethora of rigorous research projects and initiatives relating specifically to Christian schools have been undertaken across the nation. Many of these research projects have been unprecedented in both size and scale and have established important data sets and meaningful and insightful analysis of the Australian Christian schools sector.

Explore the full list of research projects on the website.

Explore Research



The high quality research undertaken by CSA helps all Christian schools and the wider community better understand the nature of the work we are doing and the impact it is having across the nation.

Dr Graeme Cross, CEO, Swan Christian Education Association (SCEA).

COLLABORATIONS

CSA's resources and services are extensive, and extend into collaborations and partnerships with other organisations.

Resources that are available to schools, but also enhance the standing of Christian Education in Australia can be viewed via the following links.

My Christian School



History of Education



GOVERNANCE

CSA seeks to actively support and equip school boards in their vitally important roles and responsibilities in school governance. Ultimately it is the school board who has the responsibility to set the school's vision, mission, values and goals and it works to empower school management to implement and operationalise this vision and strategy.

CSA provides a range of resources, training and development specifically for use by board members. Training is available in both face-to-face and online formats to assist schools in meeting time-specific government requirements.

Examples include:

- Governance Resources
- Board Assessment Tool
- The School Governance Program
- Missional Governance: Boards that Transform
- The Responsible Officer Induction Course and Responsible Officer Training Course

Explore Governance



Situated in the remote Indigenous community of Napranum, Kluthuthu Christian College deeply appreciates CSA's support in its pioneering phase exemplifying the collaborative strength of the CSA network which embraces Indigenous perspectives and wisdom all firmly grounded in our shared Biblical Christian faith.

Dr Avril Howard, Board Chair, Kluthuthu Christian College.

MODES AND MODELS OF SCHOOLING

CSA is committed to the best educational, social, emotional and spiritual outcomes for the students within our schooling network. As our society changes overtime, CSA walks beside school leaders to explore different modes of delivery and diverse models of schooling for each unique context and distinct cohort.

CSA endeavours to share the inspirational journey of member schools as they challenge the traditional model of education. Examples can be viewed within our Video Resources

Video Resources





EVENTS and CONFERENCES

CALENDAR OF EVENTS

CSA provides an online Calendar of Events, with information and links to all upcoming events within the CSA network, both state and national. The website not only provides all relevant information, but the booking process easily links from the event page. Visit csa.edu.au/events.

PROFESSIONAL DEVELOPMENT

Events are organised by CSA State and National offices, and by the wider membership network. Member schools access professional development at a national, state, regional and local level. Professional development opportunities include: conferences, seminars and workshops, governance training and curriculum days for all sectors of school employees.

COMPASS

Compass Foundation is a division of Christian Schools Australia, focussing on serving students across the broader Christian schools sector. Compass hosts places of intensive formation where God's vision for life is explored, and where a biblical imagination is fostered. Students are immersed in the biblical story and encouraged to grapple with the culture in which we live. The mantra of Compass is simple, but profoundly important in the work of formation: Know the Gospel; Know Culture; Translate. A Student Leader's Conference is hosted annually in Canberra, and shorter in-school events for students and staff are available.

Events Calendar



Explore Compass



WEBINARS/TOWN HALLS

From time-to-time, CSA hosts webinars or town halls to provide critical information and updates on key issues confronting Christian education, particularly with changes to legislation and other national concerns, eg. COVID-19. These are generally held outside of school hours via online conferencing technology, such as Zoom.

WORKSHOPS/MASTERCLASSES

CSA often provides a range of workshops and masterclasses on specific topics when special guest speakers or world-class presenters are available. These can range from online options to a road-show style of events that are hosted at various schools around the nation.



CSA NATIONAL LEADERS' SUMMIT

The CSA National Leaders' Summit is an annual gathering of school leaders (and emerging leaders) from CSA member schools across Australia. The event is designed to allow attendees to network and spend time in professional development around key elements of Christian schooling. The event takes place from a Wednesday to Friday (usually in August) with Monday and Tuesday being optional days for a cultural and educational experience (usually incorporating school visits).



CHRISTIAN SCHOOLS NATIONAL POLICY FORUM AND SYMPOSIUM

The Christian Schools National Policy Forum and Symposium is an annual gathering of leaders in Christian schooling across Australia and incorporates not just CSA members but other Christian schooling leaders and associations. The event is designed to allow attendees to interact, not only with each other, but also with Members of Parliament and Senators for dialogue around key issues confronting Christian education. The forum is usually scheduled during a parliamentary sitting week on the Monday and Tuesday with the symposium taking place on the Wednesday.

CHRISTIAN SCHOOLS NATIONAL BUSINESS CONFERENCE

The Christian Schools National Business Conference is a biennial gathering of leaders in Christian schooling across Australia and is also open to leaders and associations outside of CSA. The event is designed to allow attendees to network with each other, as well as provide professional learning around key issues confronting leaders involved in the 'business' aspects of Christian schools. The event takes place from a Wednesday to Friday usually in October.

STATE CONFERENCES

The CSA State Conferences are hosted across the country and are aimed at all staff working in CSA Member Schools across teaching and support & administration. The events provide an opportunity to get together with like-minded professionals to sharpen thinking around the role staff play, not only in their school, but the bigger picture of Christian Education. The conference program is usually similar between all states with a range of sessions to provide opportunity to engage in rich and deep discussion around the purpose and practice of Christian Education. Allowing for reflection about the environments we are creating and how we can leverage each aspect of the learning experience to help young people grow intellectually and spiritually, equipping them to capably and excellently live out their God-given purpose.





CHRISTIAN SCHOOLS AUSTRALIA

csa.edu.au

1300 321 CSA

National Office

Suite 14, Level 1
22-30 Franklin Street
Manuka ACT 2603

PO Box 3069
Manuka ACT 2603

+61 2 9887 4099
csa@csa.edu.au